

**BNE** | **REAL ESTATE GROUP**

**BNE** | REAL ESTATE GROUP

BNE Real Estate Group is a family-owned, vertically integrated organization with over 60 years of experience in the development, ownership, and management of high-quality real estate assets.

Over the years, our demonstrated talent and long-range perspective has driven the success of our distinguished portfolio of properties, which include the development of over 30,000 luxury homes, more than 1 million square feet of commercial space, and the construction and on-going management of nearly 8,000 apartments.

As a full-service owner and developer, BNE Real Estate Group manages its real estate projects from the early acquisition phases through design, construction, marketing, sales/leasing, and on-going property management. Now in our third generation with more than 2,000 homes in the pipeline, BNE brings the assurance of a strong, reliable ownership team that is firmly committed to creating exceptional real estate experiences in key urban and suburban markets. We continue to pursue new opportunities in the marketplace that will leverage our development experience and prove successful for our company, clients, and partners.





**BNE** | REAL ESTATE GROUP**DEVELOPMENT, INVESTMENTS & ACQUISITIONS**

From sourcing new development and investment opportunities, to project planning, financial analysis, partnership structuring, and raising capital, BNE Real Estate Group manages the entire development process to achieve substantial returns for our partners and investors. Our company platform and the versatility of our talented team are responsible for the success of BNE's impressive portfolio, which includes assets in all real estate types. BNE prides itself on its ability to perform the following services to ensure the successful development of each project.

- Property Selection
- Acquisitions
- Due Diligence
- Legal
- Planning
- Entitlements/Permitting
- Financing
- Financial Modeling
- Partnership Structuring





## **BNE** | REAL ESTATE GROUP

### **CONSTRUCTION MANAGEMENT**

BNE Real Estate Group's in-house construction team offers a full spectrum of construction and project management services, dedicating a skilled team of professionals to complete projects on time and within budget. From our executive-level design and construction team to our onsite project managers, BNE's construction division brings an owner's perspective and a unified approach to the entire development process, delivering projects with the highest possible standards of quality.

- Construction Management
- Design
- Material Purchasing
- Budgeting
- Project Schedules





**BNE** | REAL ESTATE GROUP

**MARKETING, SALES & LEASING**

From market positioning, product development, marketing management, and onsite sales/leasing, BNE's in-house marketing division strategically leverages each community's unique design elements, lifestyle amenities, and location in order to create cohesive brand experiences that ultimately ensure the property's success.

- Market Research
- Comparative Reports
- Product Development & Design
- Amenity Programing
- Project Positioning
- Promotional Strategy
- Unit Model Merchandising
- Project Event Planning
- Conversion & Traffic Reporting
- Budget Management
- Inventory Control
- Product Sales and Training
- Recruiting and Staffing
- Sales and Leasing





## **BNE** | REAL ESTATE GROUP

### **PROPERTY MANAGEMENT**

BNE Real Estate Group's property management division is firmly committed to delivering the highest level of customer service to our residents by providing extensive resources and flexibility, serving each one of our distinguished communities based on its unique needs. Through innovative systems, attention to detail, and a highly trained professional staff, BNE's management team has earned a stellar reputation for superior service, reliability, and responsiveness.

- Administration
- Rent Collection
- In-House Vendor Contracting
- Legal
- Accounting
- Customer Service
- Marketing and Leasing
- Capital Improvements
- Staffing and Personnel
- Financial Reporting
- Lifestyle Management Services



**LARRY PANTIRER | PRINCIPAL**

Larry Pantirer earned a Bachelor of Arts degree from Cornell University in 1971. He graduated from New York Law School in 1975, and is a member of The New Jersey Bar Association. In 1985, he and his partners formed BNE Real Estate Group. Larry's expertise in legal matters, land planning, and the approval process strongly influences the success of BNE Real Estate Group.

**HOWARD SCHWARTZ | PRINCIPAL**

Howard Schwartz attended Pratt Institute and Herbert Lehman College and earned a Bachelor of Science degree in 1972. As a principal of BNE Real Estate Group, Howard oversees the construction of more than 25 housing developments and supervises a staff of more than 75 field personnel comprised of sales managers, project managers, and construction support. Howard's hands-on approach to managing the on-site operations of BNE Real Estate Group is a major asset to the company.

**ALAN PINES | PRINCIPAL**

Alan Pines graduated Boston University with a Bachelor of Science degree in 1979. He earned a Bachelor of Arts degree in 1981, from Arnold and Marie Schwartz College of Pharmacy. Afterward, he joined his brothers-in-law at BNE Real Estate Group. Alan is responsible for the overall financial development of the company including the supervision of more than 100 BNE staff members in the company's financial departments.

**JONATHAN SCHWARTZ | PRINCIPAL**

Jonathan Schwartz is a third-generation principal of BNE Real Estate Group. Leading the company's acquisition and asset management activities, he is primarily responsible for sourcing, negotiating, and executing new development opportunities, while also overseeing the daily management of the company and its existing portfolio of assets. Jonathan's expertise in sourcing new deals, project planning, and the approval process makes him a valuable asset to BNE. Jonathan graduated with a Bachelor of Arts degree from Muhlenberg College and currently lives in New Jersey.

**DAVID PANTIRER | PRINCIPAL**

David Pantirer is a third-generation principal of BNE Real Estate Group. A graduate of Benjamin N. Cordoza School of Law, David serves as BNE's in-house counsel, while also providing financial analysis and investment viability for new development opportunities. He coordinates development budgets, designs capital structures, and solicits equity and debt financing for new developments and capital improvement projects. He interfaces with lenders, partners, and outside equity investors, managing the overall development process to ensure that BNE's developments are successful for the company as well as our clients and partners.

**MARC PANTIRER | PRINCIPAL**

Marc Pantirer is a third-generation principal of BNE Real Estate Group. A graduate of Fordham University School of Law, Marc serves as BNE's in-house co-counsel and also oversees our property management division.



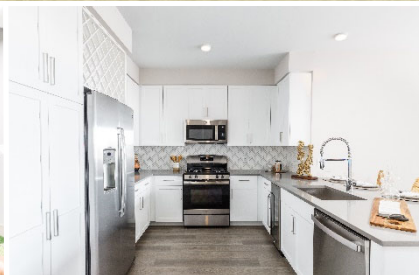
SOUTH AMBOY

# STATION BAY



SOUTH AMBOY, NJ

**BNE** | REAL ESTATE GROUP





# 99 BRIDGE

**BNE** | REAL ESTATE GROUP



OLD BRIDGE, NJ

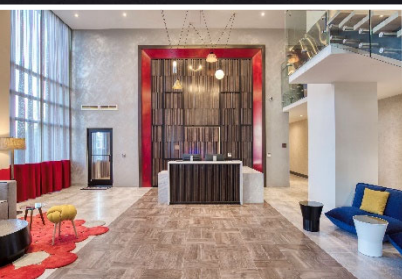
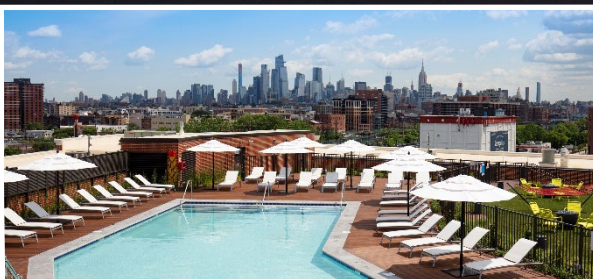


# THE ENCLAVE



JERSEY CITY, NJ

**BNE** | REAL ESTATE GROUP



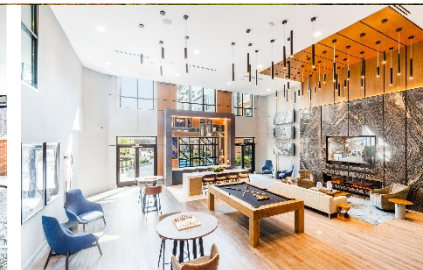
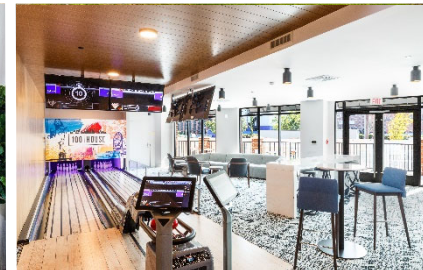
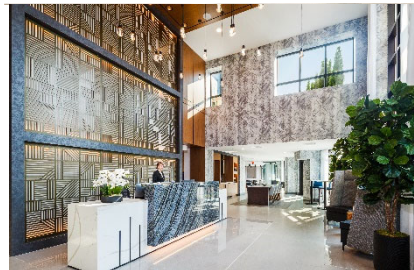


# 100 | HOUSE

AT THE ENCLAVE



JERSEY CITY, NJ



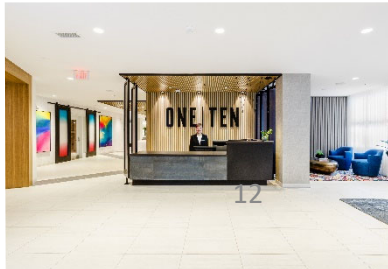
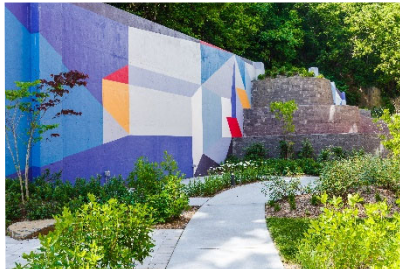
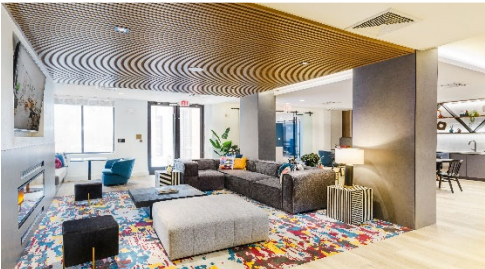


# ONE | TEN

AT THE ENCLAVE



**BNE** | REAL ESTATE GROUP



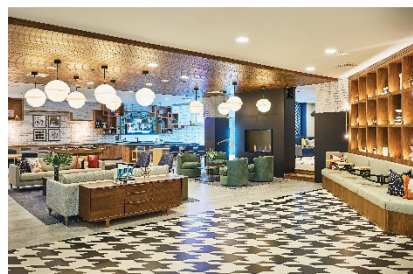
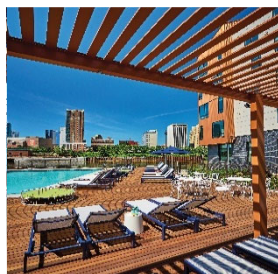


# Dey&Bergen.



HARRISON, NJ

**BNE** | REAL ESTATE GROUP





# One HARRISON



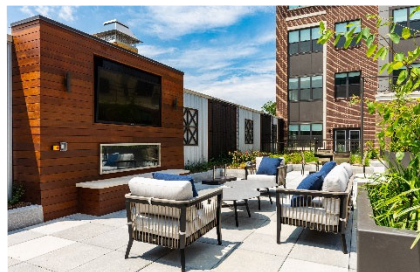
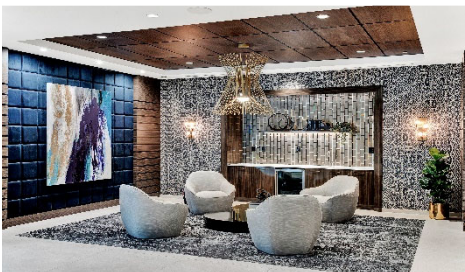
HARRISON, NJ

**BNE** | REAL ESTATE GROUP





# ONE | 500





# The GROVE

AT PISCATAWAY



PISCATAWAY, NJ

**BNE** | REAL ESTATE GROUP





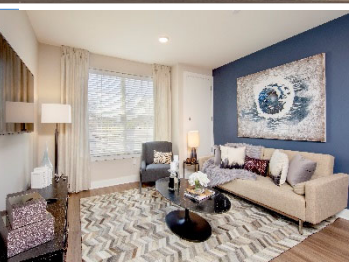
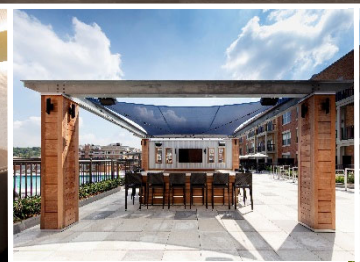
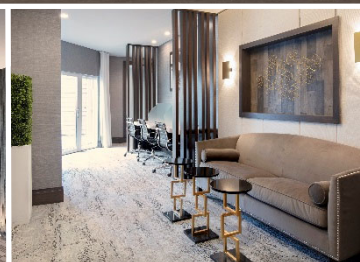


# ONE WILLIAM

ENGLEWOOD



ENGLEWOOD, NJ







# THE MONARCH



EAST RUTHERFORD, NJ

**BNE** | REAL ESTATE GROUP







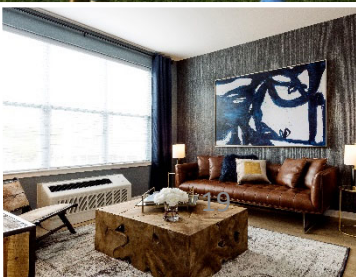
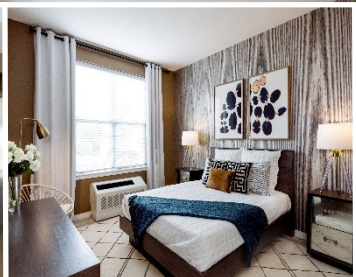
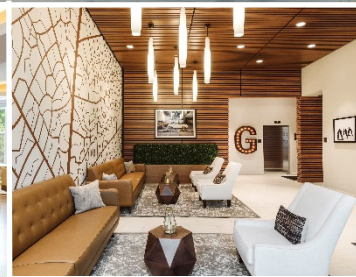
**THE GREEN**  
LIFE IN BLOOM



BLOOMFIELD, NJ

IMAGINATED

**BNE** | REAL ESTATE GROUP



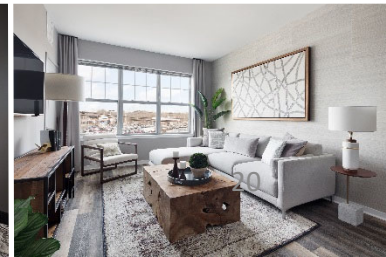
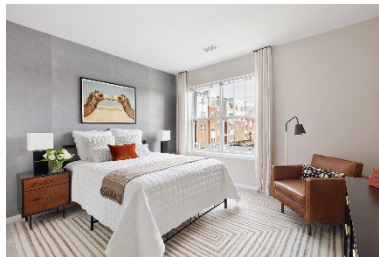


# THE LINK

AT ABERDEEN STATION



ABERDEEN, NJ



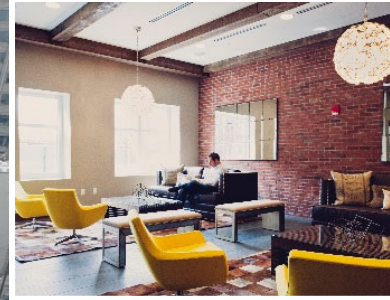


# WARREN AT YORK

**BNE** | REAL ESTATE GROUP



JERSEY CITY, NJ





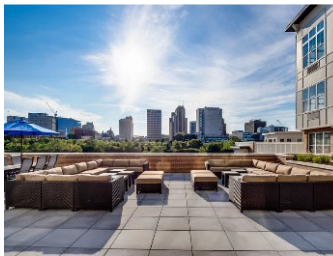


# WATER'S EDGE

AT HARRISON



HARRISON, NJ





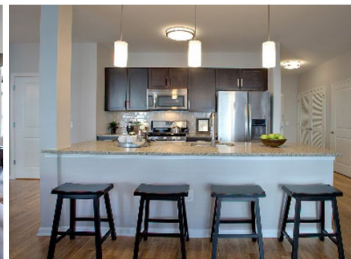


# THE HILLSIDE CLUB



LIVINGSTON, NJ

**BNE** | REAL ESTATE GROUP





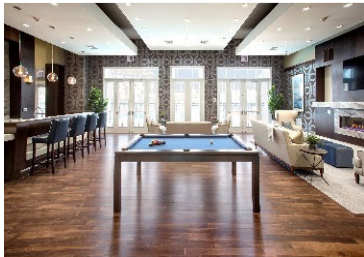
THE CLUB  
AT PEARL RIVER



PEARL RIVER, NY

AGENCY | ED

**BNE** | REAL ESTATE GROUP





# TWENTY50

FORT LEE

**BNE** | REAL ESTATE GROUP



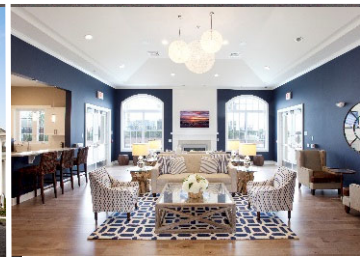
FORT LEE, NJ



# THE WAVERLY



NEPTUNE, NJ

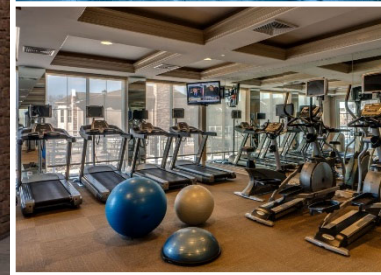




# VIZCAYA

★ ★ ★ ★ ★

**BNE** | REAL ESTATE GROUP



WEST ORANGE, NJ